



09/18/2019

Fairfield STP DECK(51) Public Information Meeting

VT Route 36 – Bridge #6 over Fairfield River

May 28, 2024

Introductions

Rob Young, P.E.

VTrans Project Manager

Artie St. Onge

Contractor

Chris Lavalette

VTrans Resident Engineer

Stephanie Barrett

Public Information Officer

David Peterson, P.E.

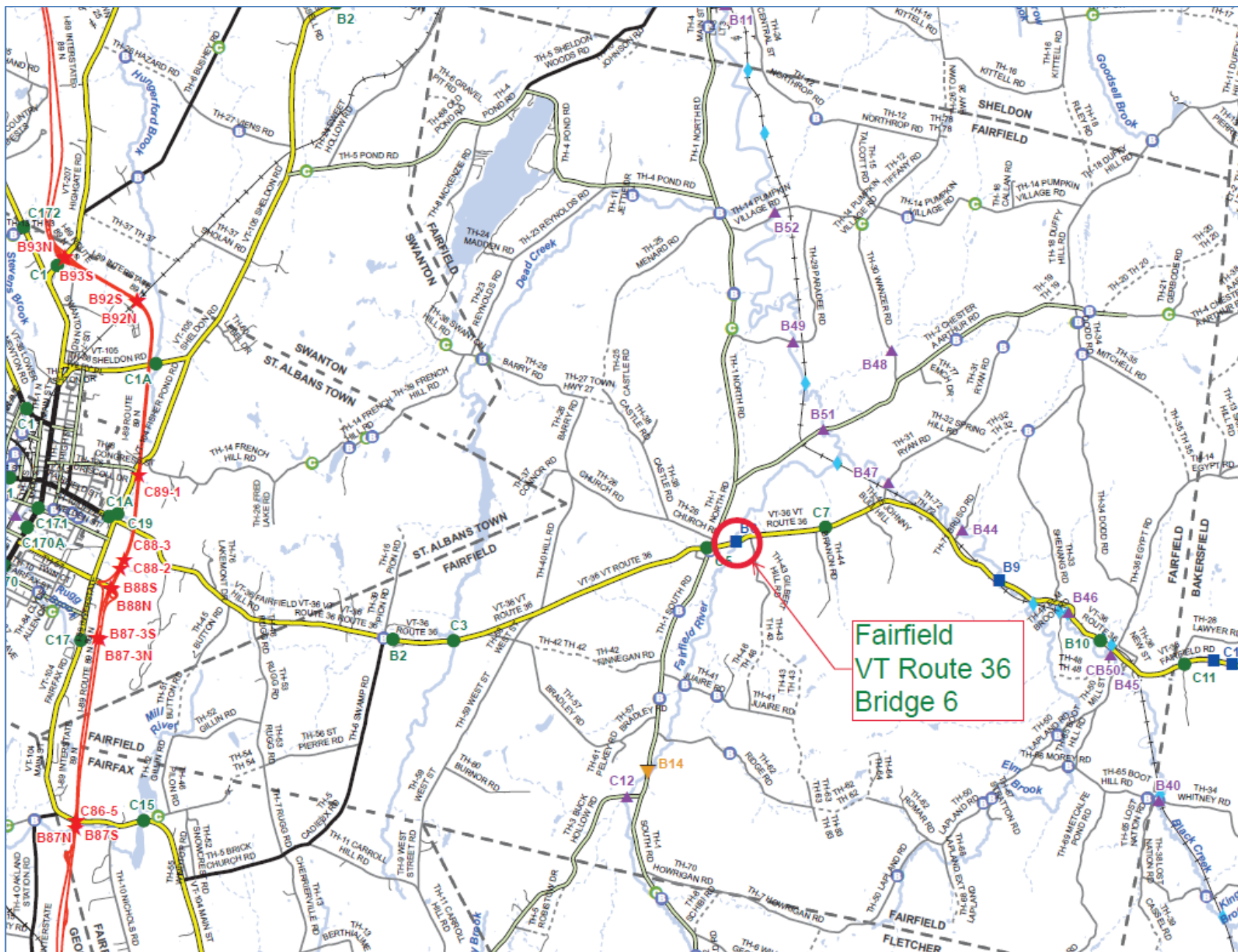
VTrans Project Engineer

Josh Paquette

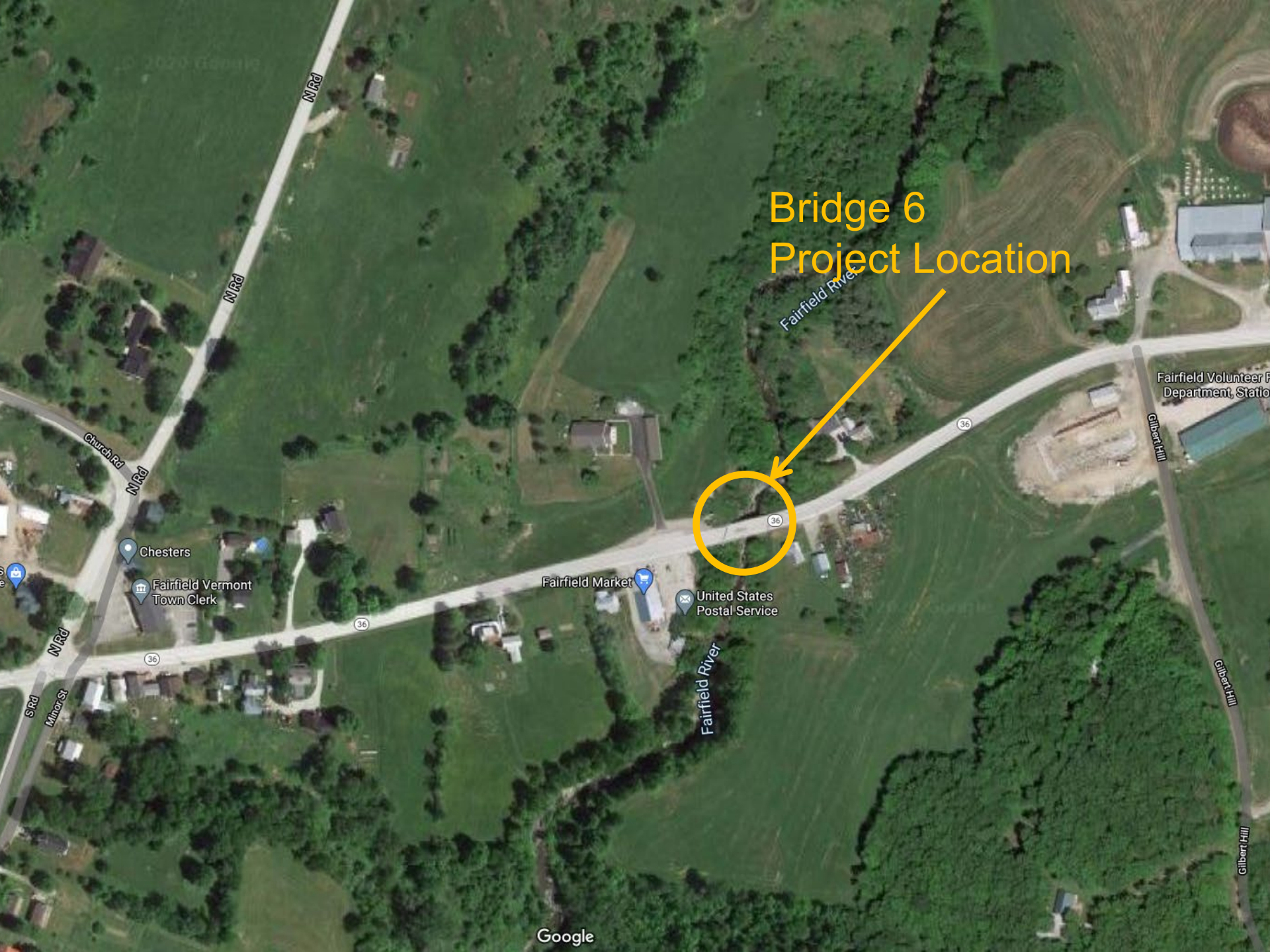
VTrans Design Engineer

Meeting Overview

- Project Overview
 - Existing Conditions
 - As Designed
- Maintenance of Traffic during Closure
- Project Construction Schedule
- Public Information Consultant Contact Info
- Questions

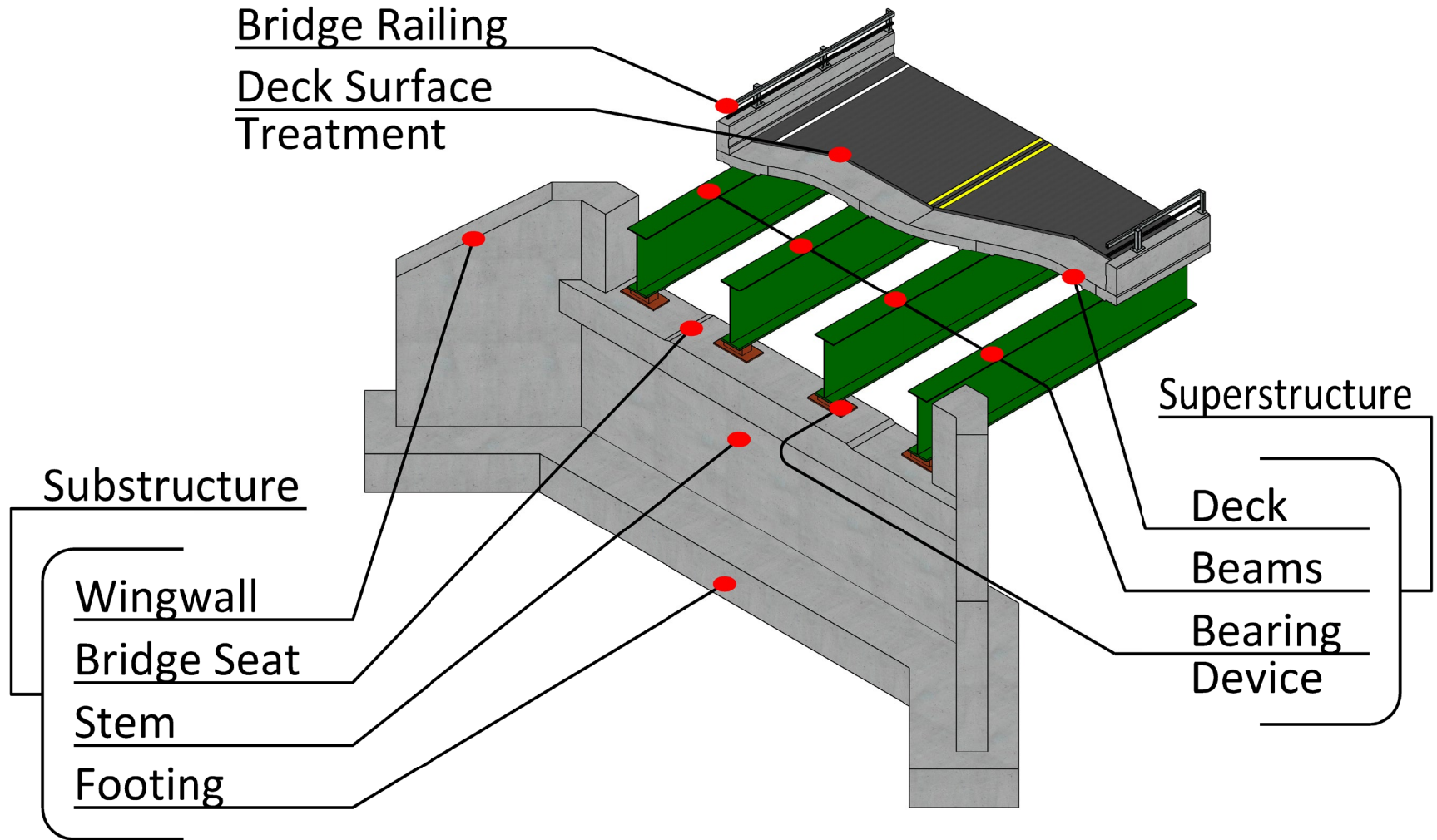


Location Map



Bridge 6
Project Location

Description of Terms Used



Looking West over Bridge 6

Existing Conditions – Bridge #6

- Roadway Classification – Major Collector
- Bridge Type – 89' Long, Single Span Rolled Beam Bridge
- Ownership – State of Vermont
- Constructed in 1955
- United States Post Office and gas station/market located in southwest quadrant



Looking East over Bridge 6



Existing Conditions – Bridge #6

- Aerial Utilities
- The Fairfield Town garage and fire department are located 0.2 miles to the east on VT Route 36

09/18/2019

Existing Conditions – Bridge #6

- The reinforced concrete deck is in fair condition. There is extensive saturation throughout with map cracking, light scaling, scattered delaminations, and scattered small spalls along the beam flanges. Additionally, a 1-foot x 2-foot full depth hole has developed.
- The existing rolled beams have moderate paint distress with rusting. There is paint peel and areas of rust scale with minor pitting and section loss along the flanges, beam ends, and fascias.
- The reinforced concrete curtain wall at abutment 2 has a full height vertical shrinkage crack with surrounding delaminations. The reinforced concrete curtain wall at abutment 1 has a full height settlement crack with large surrounding delaminations.

Condition Ratings

Existing Conditions - Bridge #6

- Deck Rating 5 (Fair)
- Superstructure Rating 6 (Satisfactory)
- Substructure Rating 6 (Satisfactory)

09 / 18 / 20

Northern Abutment



Existing Conditions - Bridge #6 10/2019

Southern Abutment



Existing Conditions - Bridge #6

- Stub poured on bedrock

Backwall



Existing Conditions - Bridge #6

- Cracking

Underside of Deck



Existing Conditions - Bridge #124

- Beams have paint peel

Railing



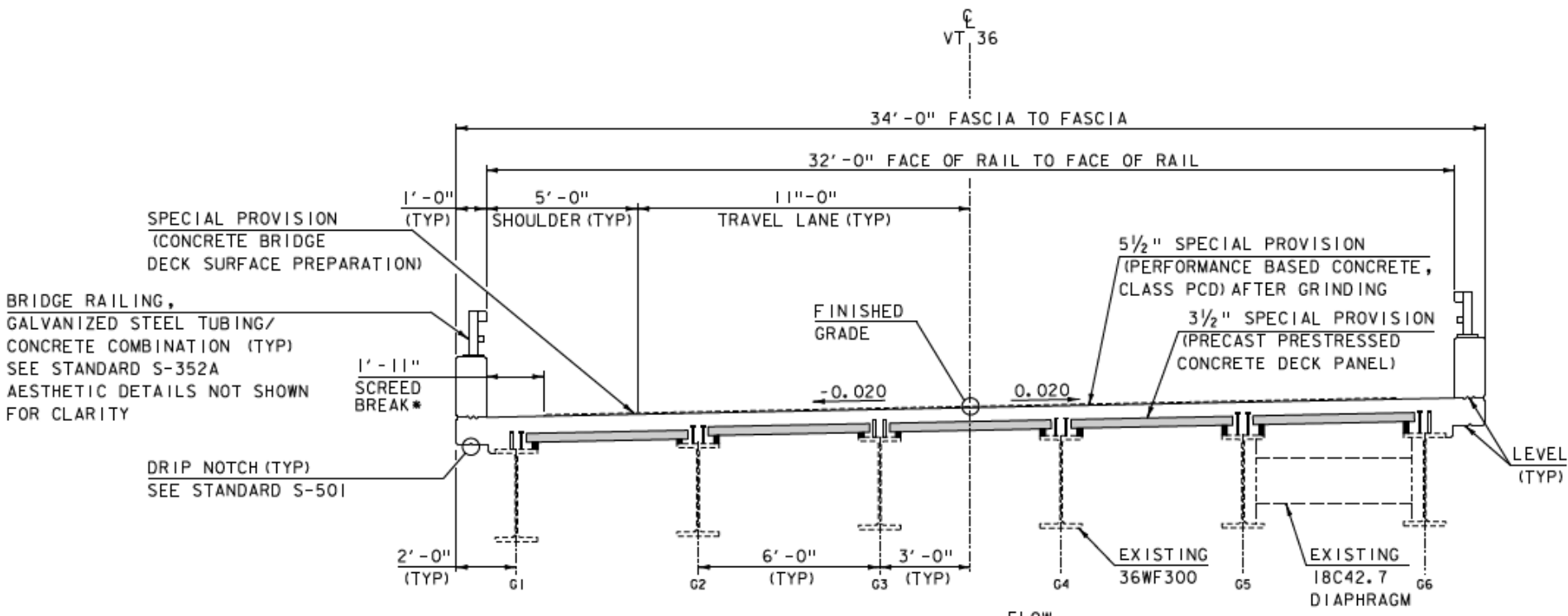
Existing Conditions - Bridge #6

- Section Loss!

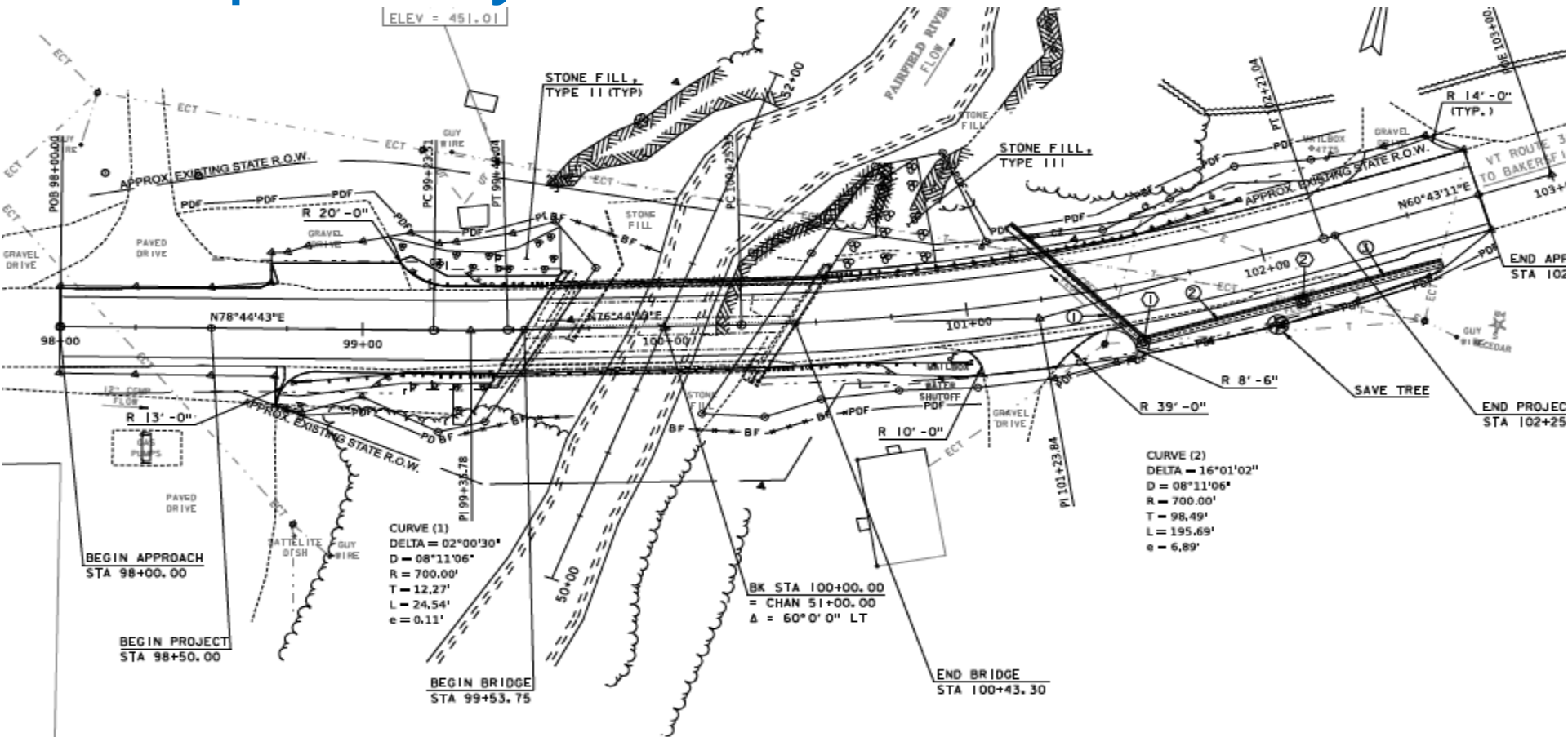
Project Summary - Bridge #6

- Deck Replacement
 - Replace the existing deck, curtain walls and bridge railing
 - Replace bridge bearings
 - Improve Bridge Typical: 11'/5' typical section – wider shoulder for bike/ped safety
 - New Combination Concrete and Steel Bridge Railing – 42" high for bike/ped safety
 - 40-year design life
 - Project Construction Cost - \$1,531,955

Proposed Bridge Typical Section



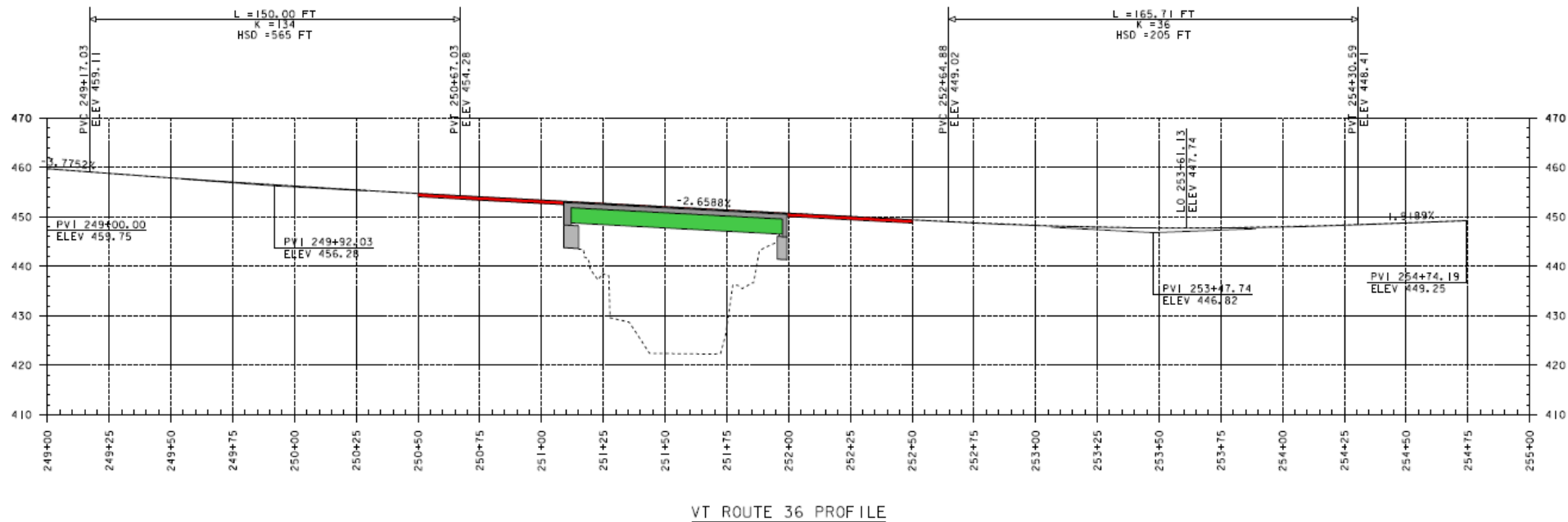
Proposed Layout



Deck Replacement - Bridge #6

- 11'5' typical
- 40-year design life

Proposed Profile



Deck Replacement- Bridge #6

- Match Existing vertical alignment

Methods of Construction

Combination of Accelerated Bridge Construction and Conventional Construction Techniques

- Accelerated Elements
 - Precast Prestressed Deck Panels – quicker forming of the deck
- Conventional Components
 - Cast in Place Deck for smooth finish and better ride
 - Curtain walls – due to complexity around the end of the bridge

Precast Deck Panels



Finished Bridge Will Look Similar To:



A photograph of a road closure. In the center is a white rectangular sign with a black border and the words "ROAD CLOSED" in large, bold, black capital letters. The sign is mounted on two white posts. Behind the sign is a concrete barrier wall. In the foreground and background, there are white and red striped traffic barriers. The background shows green trees and a clear sky.

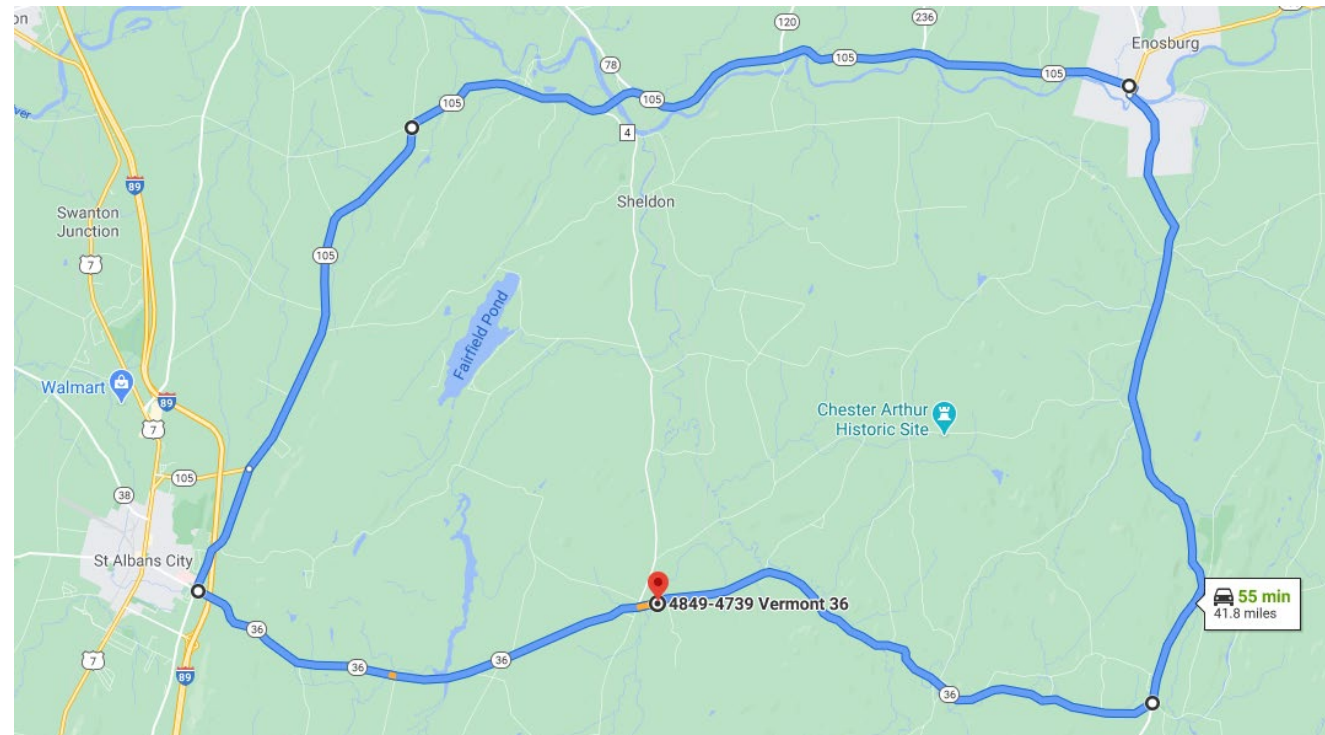
**ROAD
CLOSED**

Road Closure

- Detour chosen and signed by State
- 28-day closure
- 42 miles end-to-end
- Local Bypass route available

Traffic Control – Regional Detour

- **Regional Detour Route:** VT Route 36, to VT Route 104, VT Route 105, and VT Route 108, back to VT Route 36.
 - 14.6 Miles Through Route
 - 27.1 Miles Detour Route
 - 41.8 Miles end-to-end
 - 12.5 Miles Added



Town has received local bypass compensation to offset costs for additional maintenance, enforcement, and signage for the impact to local roads.

Project Construction Schedule

- Construction Milestone Dates (based on St. Onge initial CPM Schedule)
 - Pre-closure work – June 23rd
 - Bridge Closure Begins – July 9th
 - Bridge Closure Ends – August 4th
 - Project Complete – August 27th
 - Work Hours
 - Standard Hours 7am to 6pm, 5 Days a week. Weekend work expected during closure.

Public Outreach

- Public Outreach Consultant – Stephanie Barrett
 - To sign up for emails with project updates – send an email to:
sbarrett@coibsinc.com
 - Phone: 802-399-7847

For more information:

- <https://outside.vermont.gov/agency/vtrans/external/Projects/Structures/19B218>



Fairfield STP DECK(51) Questions and Comments VT Route 36 – Bridge #6 over Fairfield River

May 28th, 2024